



2017 Contender 25 Bay

Boat Type: Bay Boat

Address: Mobile, AL, US

Price: \$139,900



OVERVIEW

****\$15,000 PRICE DROP! BRING ALL OFFERS!! Seller has upgraded to a larger vessel. Needs this GONE!*****

Cleanest Contender 25 with all the bells and whistles. 400 Racing Mercury with just 300 hours! Two power poles, 16" stainless steel; Garmin touch screen, trolling motor and oh so much more! Recently has been ceramic coated and will last you a good 5-8 years without having to wax again!

SPECIFICATIONS

Basic Information

Manufacturer:	Contender	Vessel Name:	
Model:	25 Bay	Boat Type:	Bay Boat
Year:	2017	Hull Material:	Fiberglass
Category:	Power	Hull Type:	
Condition:	Used	Hull Color:	
Location:	Mobile, AL, US	Designer:	
Available for sale in U.S. waters:	Yes	Flag of Registry:	

Dimensions & Weight

Length:	25 ft - 7.62 meter	Draft - max:	-
LOA:	25 ft 4 in - 7.72 meter	Bridge Clearance:	-
Beam:	8 ft 6 in - 2.59 meter	Dry Weight:	3200 ft - 975.36 meter

Engine

Make:	Mercury	Engine Type:	Outboard
Model:	400 Racing	Drive Type:	
Engine(s):	1	Fuel Type:	Gas/Petrol
Hours:	200	Horsepower:	400 (Individual), 400 (combined)
Cruise Speed:	-	Max Speed:	-
Range:	-	Joystick Control:	No

Tank Capacities

Fuel Tank:	90 gallons - 1 tank(s)	Holding Tank:	-
Fresh Water Tank:	-		

Accommodations

Total Cabins:	-	Crew Cabins:	1
Total Berths:	-	Crew Berths:	1
Total Sleeps:	1	Crew Sleeps:	1
Total Heads:	-	Crew Heads:	1
Captains Cabin:	-		

DESCRIPTIONS

Manufacturer Provided Description

The 25 Bay is the perfect boat for those who love offshore fishing on calm days, and cruising around inshore on the

bay. Developed with a fully customizable dashboard with livewells and jump seats at the aft, and seating up front along with a deck for a trolling motor.

Standard Features

Hull and Deck

Hand-Laid Fiberglass throughout using multi-directional fabric Foam cored molded structural grid Self-Bailing Cockpit Non-skid Cockpit Sole and Casting Decks Heavy-Duty Rub Rail Choice of hull and deck colors Hand-painted Boot and Pin Stripe **Cockpit Sole and Casting Decks Compartments** Anchor locker with molded in anchor storage 340 quart dry storage with additional battery storage 180 quart fully lined and insulated in-floor fish box 40 gallon livewell 12 ½ gallon baitwell 170 quart insulated cooler Two rod locker stowage compartments **Console** Forward seat with built-in storage Flush mount electronics panel **Leaning Post** Under-seat dry storage 160 quart insulated cooler **Mechanical** Hydraulic Steering w/ Custom Steering Wheel Custom recessed high-performance Lenco trim tabs Waterproof Switches & Breaker Panel w/ indicator lights 2000 GPH Auto/Manual Bilge Pump Compass **Hardware** Chrome on Bronze or Stainless Steel Hardware Two flush-folding aft deck jump seats Heavy Duty Recessed Bow Lifting Ring w/cleat (pop-up) Two heavy-duty stern lifting rings Two 8" stern cleats Four flush mount gunnel rod holders Six under-gunnel rod racks

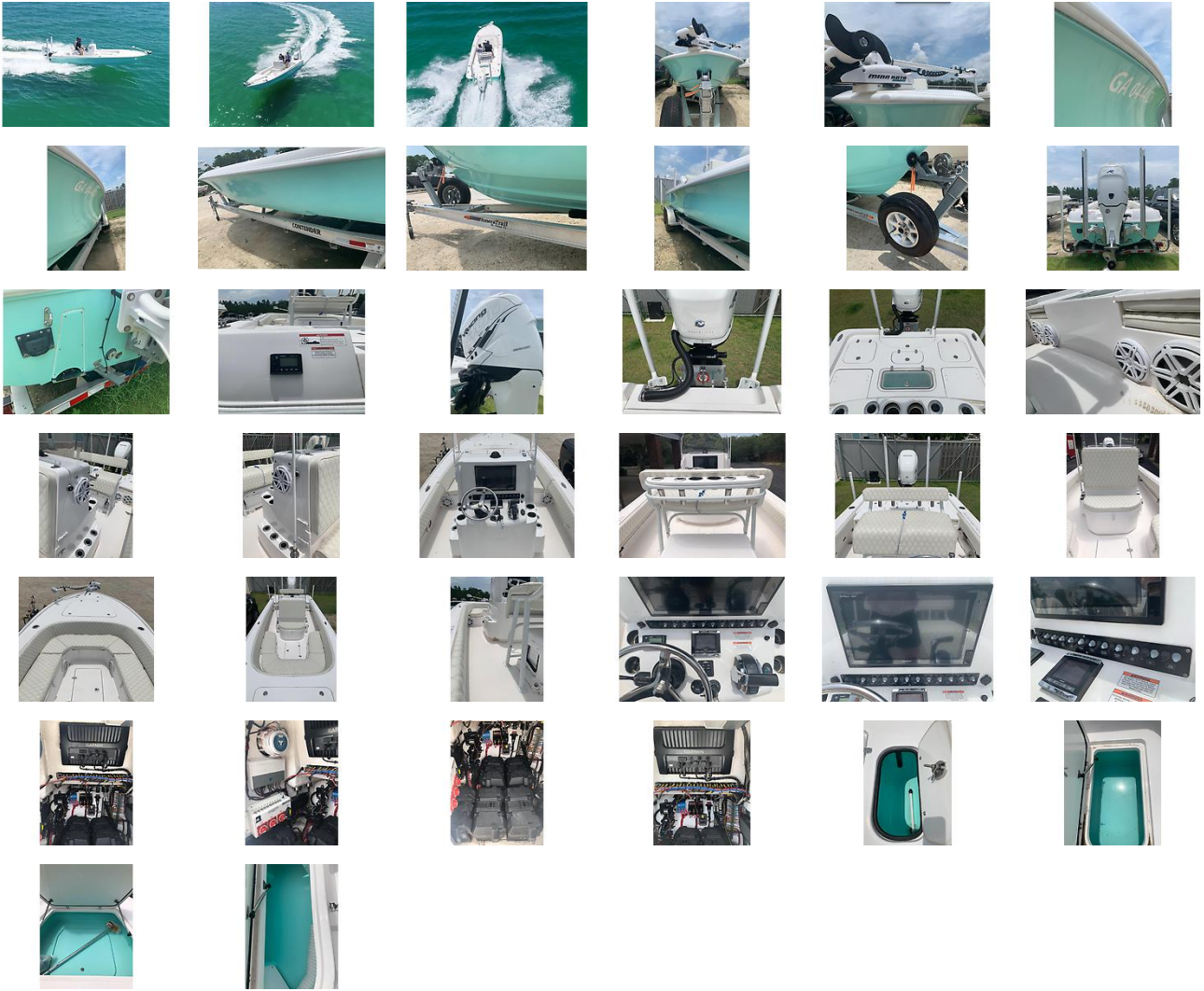
Disclaimer

The Company offers the details of this vessel in good faith but cannot guarantee or warrant the accuracy of this information nor warrant the condition of the vessel. A buyer should instruct his agents, or his surveyors, to investigate such details as the buyer desires validated. This vessel is offered subject to prior sale, price change, or withdrawal without notice.

Mechanical Disclaimer

Engine and generator hours are as of the date of the original listing and are a representation of what the listing broker is told by the owner and/or actual reading of the engine hour meters. The broker cannot guarantee the true hours. It is the responsibility of the purchaser and/or his agent to verify engine hours, warranties implied or otherwise and major overhauls as well as all other representations noted on the listing.

GALLERY



LOCATION MAP





CLAIRE MILLER
American Marine Brokerage
13430 Gulf Beach Hwy PMB #92
Pensacola, FL, US
Office: 844-44-YACHT
Mobile: 205-370-3562
claire@yachtamerican.com

