



2013 Marquis 630 Sport Yacht

Boat Type: Motor Yacht

Address: Orange Beach, AL, US

Price: **\$1,520,000**



OVERVIEW

RECENT PRICE DROP!

One Owner, Captain maintained since new in 2013. Upgraded Kohler 32KW Genset, FLIR Night Vision, Volvo-Penta Dynamic Positioning System, WaterMaker with 0 Hours, SAT TV, Phone, and Weather. Raymarine Hybrid Touch E127's with Open Array Radar and AIS, Stern/Salon/Engine Room Cameras. Always serviced ahead of time and has had upgrades and new boat issues solved with an open checkbook throughout ownership.

SPECIFICATIONS

Basic Information

Manufacturer:	Marquis	Vessel Name:	Never Enough
Model:	630 Sport Yacht	Boat Type:	Motor Yacht
Year:	2013	Hull Material:	Fiberglass
Category:	Power	Hull Type:	
Condition:	Used	Hull Color:	
Location:	Orange Beach, AL, US	Designer:	
Available for sale in U.S. waters:	Yes	Flag of Registry:	

Dimensions & Weight

Length:	63 ft - 19.2 meter	Draft - max:	4 ft 6 in - 1.37 meter
LOA:	66 ft - 20.12 meter	Bridge Clearance:	17 ft 9 in - 5.41 meter
Beam:	17 ft 2 in - 5.23 meter	Dry Weight:	71500 ft - 21793.2 meter

Engine

Make:	Volvo	Engine Type:	Inboard
Model:	IPS 1200	Drive Type:	
Engine(s):	2	Fuel Type:	Diesel
Hours:	603	Horsepower:	935 (Individual), 1870 (combined)
Cruise Speed:	29 MPH	Max Speed:	35 MPH
Range:	-	Joystick Control:	No

Tank Capacities

Fuel Tank:	1030 gallons - 1 tank(s)	Holding Tank:	160 gallons - 1 tank(s)
Fresh Water Tank:	255 gallons - 1 tank(s)		

Accommodations

Total Cabins:	4	Crew Cabins:	1
Total Berths:	-	Crew Berths:	1
Total Sleeps:	1	Crew Sleeps:	1
Total Heads:	4	Crew Heads:	1
Captains Cabin:	-		

DESCRIPTIONS

Manufacturer Provided Description

Every detail within the Marquis 630 Sport Yacht demonstrates ultra premium execution quality. The craftsmanship & joinery are the finest you will find in a yacht, regardless of size. The materials selected to craft the interior and exterior features are supreme. The hull form has been designed specifically for the 630 Marquis. Sport yacht

performance is provided by perfectly matched twin diesel engines coupled to joystick activated pod drives.

Entertaining is made simple with this forward-thinking design. featuring an integrated lower helm station, galley, salon, cockpit, and swim deck. Walk from area to area unimpeded by restrictive bulkhead doors, multiple steps or narrow hallways. The yacht's cockpit and swim deck bring you closer to the sea you love. The bridge is an elegant environment in which to command the vessel and witness gorgeous seascapes. The new Marquis 630 delivers an unmatched level of quality, prestige, reliability and hospitality to its owners and those fortunate to be invited onboard.

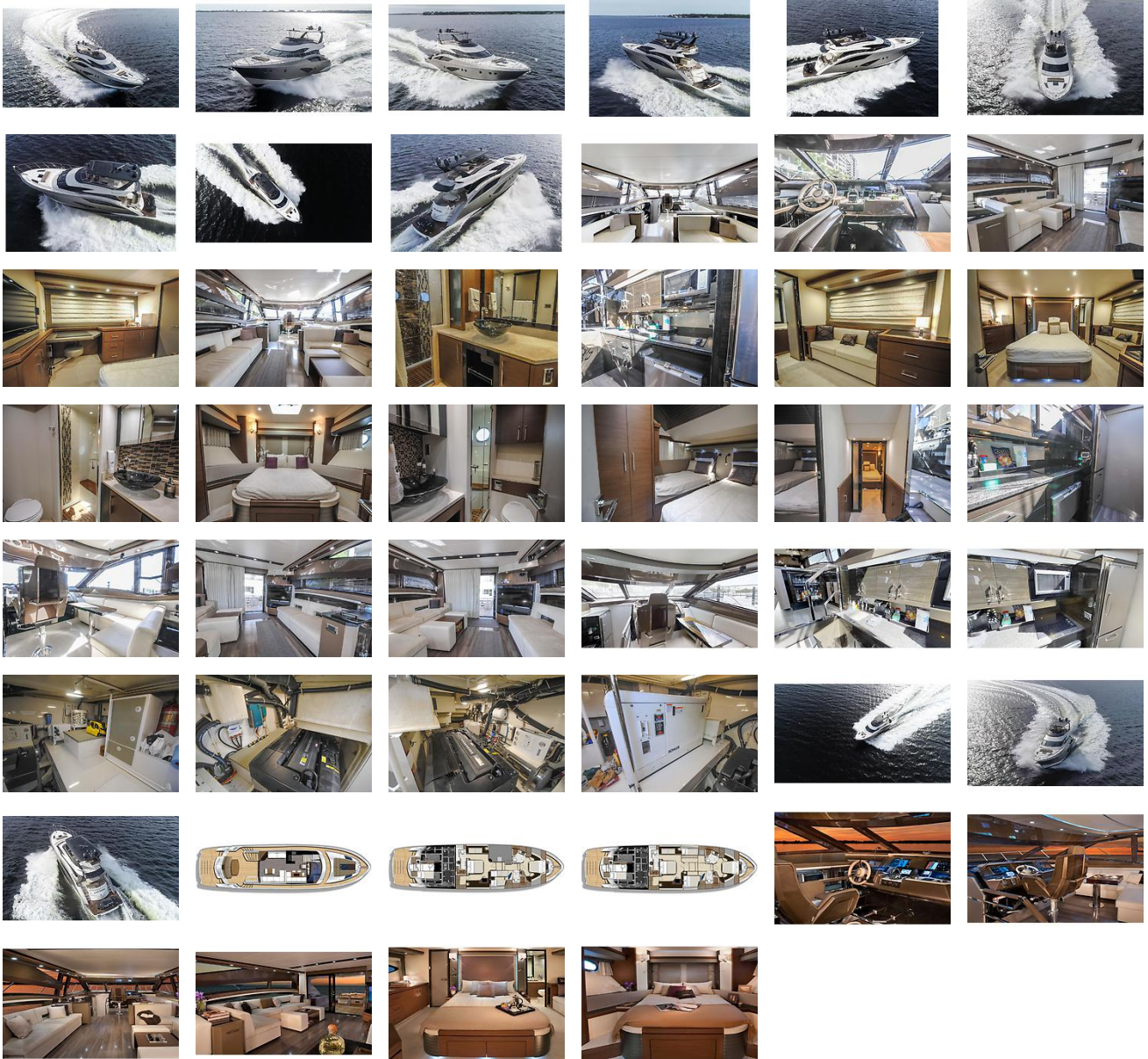
Disclaimer

The Company offers the details of this vessel in good faith but cannot guarantee or warrant the accuracy of this information nor warrant the condition of the vessel. A buyer should instruct his agents, or his surveyors, to investigate such details as the buyer desires validated. This vessel is offered subject to prior sale, price change, or withdrawal without notice.

External Links

- [3D Virtual Tour](#) Additional Media

GALLERY



LOCATION MAP





TAYLOR HOOD
American Marine Brokerage
13430 Gulf Beach Hwy PMB #92
Pensacola, FL, US
Office: 844-44-YACHT
Mobile: 251-228-1514
taylor@yachtamerican.com

