



1996 Tiara 43 Convertible

Boat Type: Sport Fishing

Address: Pensacola, FL, US

Price: \$119,000



OVERVIEW

Absolutely gorgeous Tiara 43! As you know, the late model pre-owned inventory is almost non-existent unless you want to spend a million dollars. Here's your chance to own one of the best built boats in the world for just over 100K! "The Extra Knot" is in excellent shape inside and out and has had numerous upgrades in the past year, including new canvas 1/19, underwater lights, new fridge, new Fusion sound system, new Raymarine electronics with CHIRP transducers, fresh bottom paint, SAT TV and the list goes on. She's set up to cruise the islands or, with her outriggers and Pompanette fighting chair, catch something large! Make an appointment to see this Tiara first. She won't stay on the market long.

SPECIFICATIONS

Basic Information

Manufacturer:	Tiara	Vessel Name:	The Extra Knot
Model:	43 Convertible	Boat Type:	Sport Fishing
Year:	1996	Hull Material:	Fiberglass
Category:	Power	Hull Type:	
Condition:	Used	Hull Color:	
Location:	Pensacola, FL, US	Designer:	
Available for sale in U.S. waters:	Yes	Flag of Registry:	

Dimensions & Weight

Length:	43 ft - 13.11 meter	Draft - max:	-
LOA:	43 ft - 13.11 meter	Bridge Clearance:	-
Beam:	15 ft 2 in - 4.62 meter	Dry Weight:	-

Engine

Make:		Engine Type:	Inboard
Model:	6V92	Drive Type:	
Engine(s):	2	Fuel Type:	Diesel
Hours:	1950	Horsepower:	615 (Individual), 1230 (combined)
Cruise Speed:	23 MPH	Max Speed:	-
Range:	-	Joystick Control:	No

Tank Capacities

Fuel Tank:	-	Holding Tank:	-
Fresh Water Tank:	-		

Accommodations

Total Cabins:	-	Crew Cabins:	1
Total Berths:	-	Crew Berths:	1
Total Sleeps:	1	Crew Sleeps:	1
Total Heads:	2	Crew Heads:	1
Captains Cabin:	-		

DESCRIPTIONS

Vessel Specifications

RECENT UPDATES:

- New flybridge canvas enclosure 1/19

- Bottom paint 9/18
- Underwater lights installed 9/18
- Raymarine Hybrid Touch GPS synced to autopilot
- CHIRP transducer
- New fridge

SALON:

- L-shaped Hide-a-bed sofa is to starboard and outboard of a Lucite hi/lo table.
- Entertainment Center w/ flatscreen
- Bose surround sound stereo speakers throughout
- Gorgeous cabinetry and solid-surface countertops
- Valance lighting and window shades
- Recessed overhead rod storage

STARBOARD HEAD:

- Vacuflush Head
- Vanity w/Corian countertop & storage
- Showerhead on retractable hose
- Mirrored medicine locker

FORWARD/MASTER STATEROOM:

- Island double berth w/storage
- Rope lighting at base and indirect soffit lighting
- Port & Starboard Shelving
- Mirrored forward bulkhead
- (2) Cedar-Lined Hanging Lockers
- Overhead Hatch

MASTER HEAD:

- Vacuflush head
- Vanity w/Corian countertop & storage
- Mirrored medicine locker
- Fluorescent lights
- Separate stall shower w/plexiglass door, bench seat
- Overhead hatch

GALLEY

- Norcold Trash Compactor
- Kenyon 3-burner Electric Cooktop Stove
- Microwave Oven
- Attwood Electric Water Heater
- Double Stainless Sink
- Instant Hot Water Spigot
- NuTone Food Center
- Black & Decker Spacemaker Coffeemaker
- Pantry (in forward companionway)
- Breakfast Bar
- Convertible dinette to starboard of galley- sleeps 2

ELECTRONICS AND NAV

- Raymarine Hybrid Touch GPS
- Furuno Navnet GPS/Chart/Radar

- Furuno Radar Display
- DDEC multifunction engine displays
- Robertson A/P
- Icom VHF
- Ritchie Compass
- ACR Searchlight

ELECTRICAL

- 12/110 Volt Systems
- 30a Ship's Service
- 10 KW Onan Generator
- Battery Charger
- (4) 12v Batteries
- Cablemaster 50 Amp 75 Foot Shore Power
- Parallel Switch

DECK

- Hardtop w/3 Side Enclosure
- 2 Pompanette Ladder Back Helm chairs
- Fiberglass Bow Pulpit w/Anchor Roller
- Maxwell 800 Windlass w/Remote
- Delta Anchor w/150' Chain
- Windshield Cover
- Electric/Air Horn
- Bench Seat Forward
- Tackle center and bait prep station in cockpit
- Cockpit access to engine room
- Pompanette fighting chair
- Transom door
- Live well and fish box

COCKPIT

- Cockpit Sunshade
- Fresh & Salt Water Washdowns
- (6) Rod Holders
- LED Cockpit Lights
- Cockpit Bolsters
- Transom Door
- Tackle Center w/Fresh & Salt Water Spigots at Sink
- Cutting Board, Storage
- Bait Freezer
- Livewell
- (2) Recessed Storage Wells
- Pompanette fighting chair

MECHANICAL

- 2-unit Marine Air AC
- Fireboy suppression system
- Glendinning Synchronizer
- Twin Disc Transmissions
- Hydraulic Steering w/Morse Engine Controls
- (4) Electric/Automatic Bilge Pumps

- (2) Blowers
- Groco Oil Change Pump
- Emergency Stop
- Floscan Meters
- Trim Tabs

Disclaimer

The Company offers the details of this vessel in good faith but cannot guarantee or warrant the accuracy of this information nor warrant the condition of the vessel. A buyer should instruct his agents, or his surveyors, to investigate such details as the buyer desires validated. This vessel is offered subject to prior sale, price change, or withdrawal without notice.

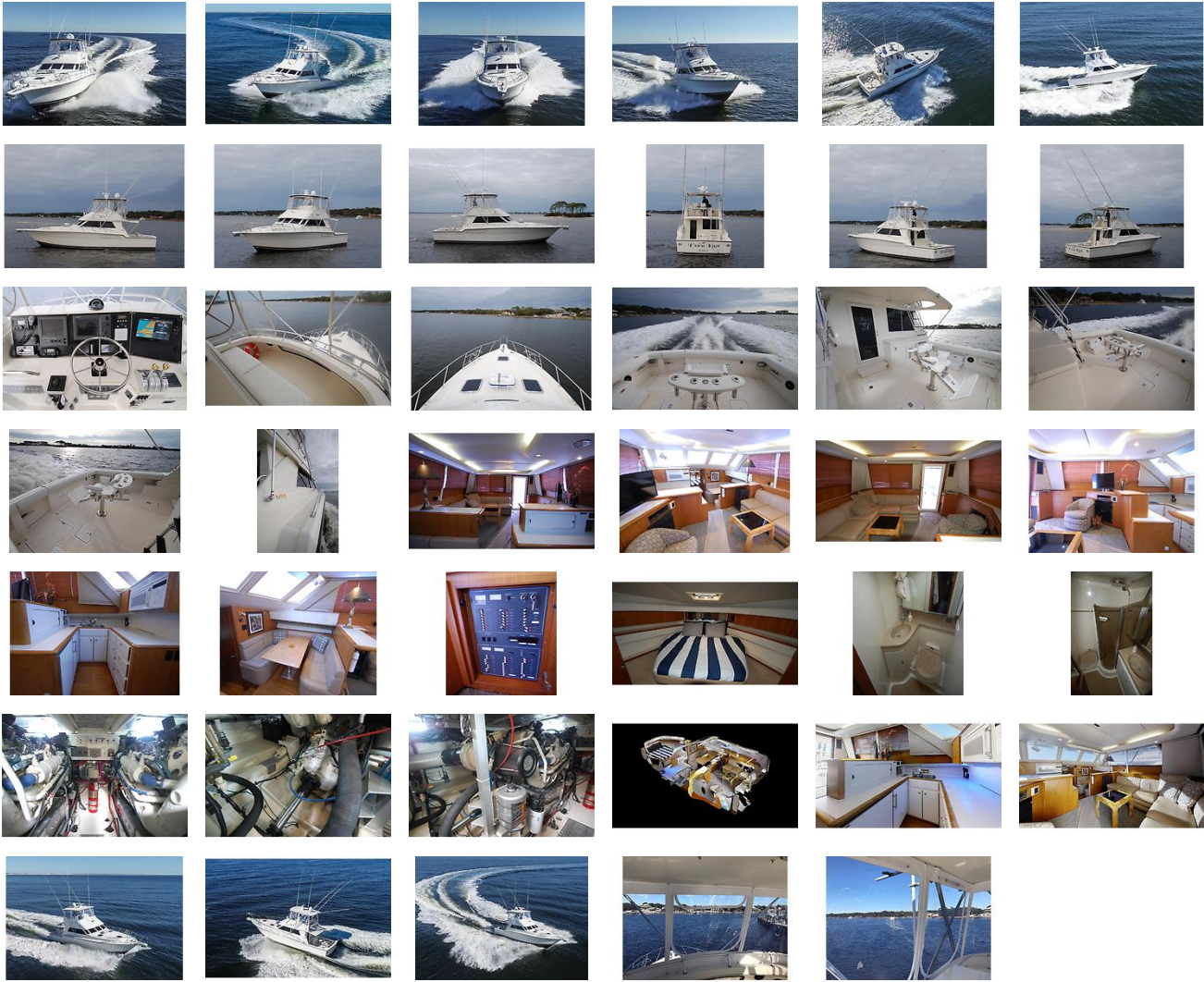
Mechanical Disclaimer

Engine and generator hours are as of the date of the original listing and are a representation of what the listing broker is told by the owner and/or actual reading of the engine hour meters. The broker cannot guarantee the true hours. It is the responsibility of the purchaser and/or his agent to verify engine hours, warranties implied or otherwise and major overhauls as well as all other representations noted on the listing.

External Links

- [3D Interactive Virtual Tour](#) Additional Media

GALLERY



LOCATION MAP



