



2003 Sea Ray 290 Amberjack

Boat Type: Saltwater Fishing

Address: Orange Beach, AL, US

Price: \$46,500



OVERVIEW

Awesome opportunity on a low-hour, indoor stored Amberjack. She has all of the right features for offshore fishing and cruising, including GPS with Radar, Generator, AC/Heat, Bravo III drives, upgraded Mercruiser 6.2 engines, and interior accommodations usually found on larger boats! This boat is 100% ready to go. She was waxed throughout 3/18 and is ready for her next owner. She has no bottom paint and has never been kept in the water!

SPECIFICATIONS

Basic Information

Manufacturer:	Sea Ray	Vessel Name:	Recovery Room
Model:	290 Amberjack	Boat Type:	Saltwater Fishing
Year:	2003	Hull Material:	Fiberglass
Category:	Power	Hull Type:	
Condition:	Used	Hull Color:	
Location:	Orange Beach, AL, US	Designer:	
Available for sale in U.S. waters:	Yes	Flag of Registry:	

Dimensions & Weight

Length:	29 ft - 8.84 meter	Draft - max:	2 ft 10 in - 0.86 meter
LOA:	-	Bridge Clearance:	-
Beam:	10 ft 6 in - 3.2 meter	Dry Weight:	11300 ft - 3444.24 meter

Engine

Make:	MerCruiser	Engine Type:	Inboard / Outboard
Model:	62L MPI Bravo III	Drive Type:	
Engine(s):	2	Fuel Type:	Gas/Petrol
Hours:	380	Horsepower:	260 (Individual), 520 (combined)
Cruise Speed:	-	Max Speed:	-
Range:	-	Joystick Control:	No

Tank Capacities

Fuel Tank:	230 gallons - 1 tank(s)	Holding Tank:	28 gallons - 1 tank(s)
Fresh Water Tank:	30 gallons - 1 tank(s)		

Accommodations

Total Cabins:	-	Crew Cabins:	1
Total Berths:	-	Crew Berths:	1
Total Sleeps:	1	Crew Sleeps:	1
Total Heads:	1	Crew Heads:	1
Captains Cabin:	-		

DESCRIPTIONS

Manufacturer Provided Description

The Sea Ray 290 Amberjack is the answer to the fervent prayers of both sportfishermen and cruising enthusiasts alike. Because the 290 Amberjack is designed to meet several boating criteria, Sea Ray has given careful thought to the cockpit area. It has an open layout and spacious seating with concealed storage for water toys, as well as the

wide gunwales and generous freeboard desired for safe and successful sport fishing. The optional fishing package has an aluminum arch with rocket launcher rod holders. The 290 Amberjack is just as carefully planned belowdecks. The spacious cabin provides a comfortable place to relax. Having done its duty as a dining area, the dinette converts to a double berth at night. There's even an extra bunk for additional guests. The galley is well equipped to prepare a snack or quick meal. Its fiberglass countertop has a built-in sink and cutting board. The dual-voltage refrigerator stores sandwich makings, and there's a microwave for warming. The head compartment features a VacuFlush toilet, mirrored vanity with sink and storage below, plus a shower with curtain. The spacious forward berth has storage for large, bulky items underneath, as well as shelf, lots of cabinet space and a mirrored rope locker. A privacy curtain may be drawn, and the screened deck hatch opens to provide natural light, fresh air and ventilation. The 290 Amberjack is powered by upgraded twin 6.2L MPI Bravo III stern drives.

Disclaimer

The Company offers the details of this vessel in good faith but cannot guarantee or warrant the accuracy of this information nor warrant the condition of the vessel. A buyer should instruct his agents, or his surveyors, to investigate such details as the buyer desires validated. This vessel is offered subject to prior sale, price change, or withdrawal without notice.

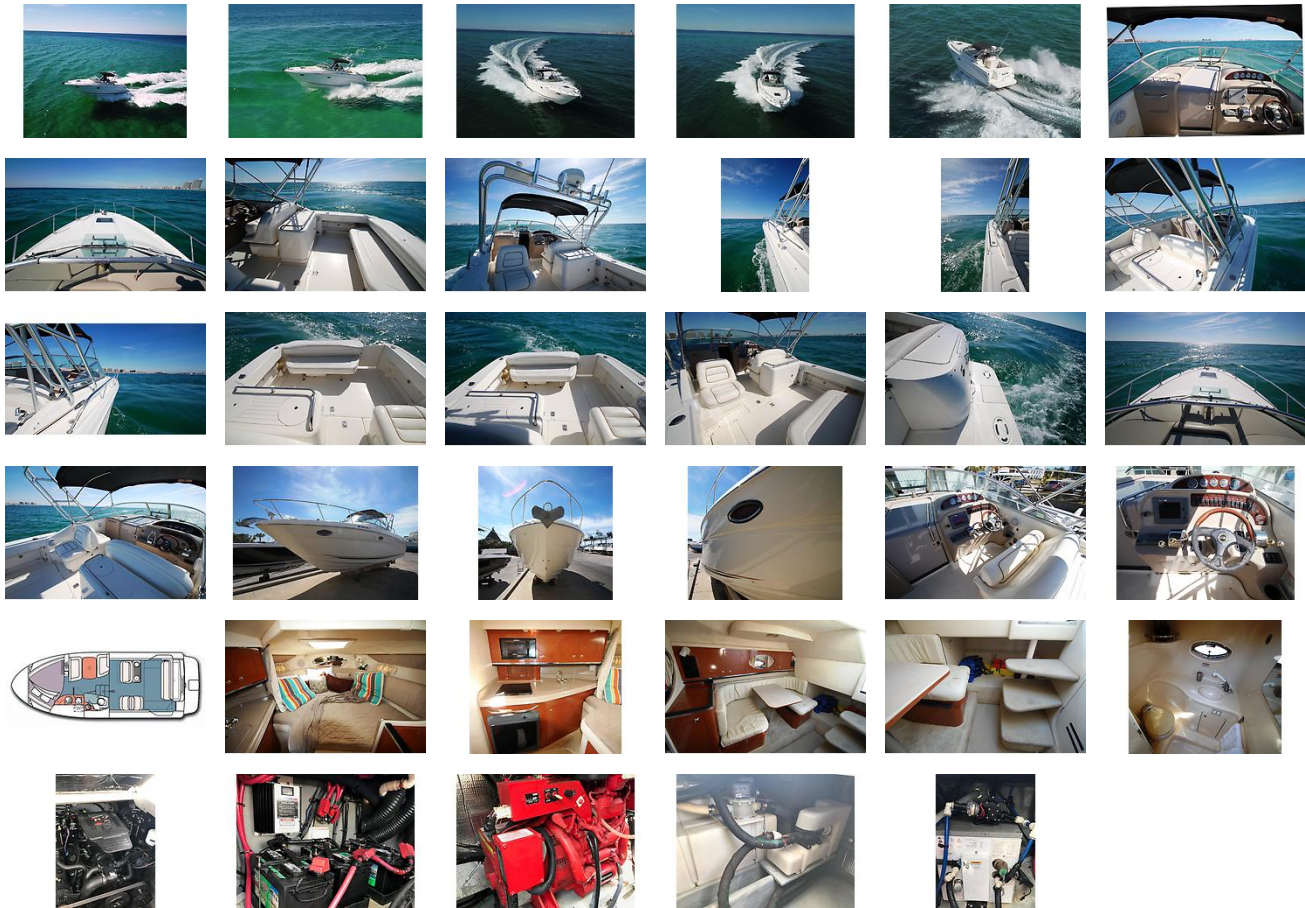
Mechanical Disclaimer

Engine and generator hours are as of the date of the original listing and are a representation of what the listing broker is told by the owner and/or actual reading of the engine hour meters. The broker cannot guarantee the true hours. It is the responsibility of the purchaser and/or his agent to verify engine hours, warranties implied or otherwise and major overhauls as well as all other representations noted on the listing.

customContactInformation

Text Claire Miller at 205-370-3562 or call Ben Montgomery at 850-259-8009 for more details on this opportunity!

GALLERY



LOCATION MAP



BEN MONTGOMERY
 American Marine Brokerage
 13430 Gulf Beach Hwy PMB #92
 Pensacola, FL, US
 Office: 844-44-YACHT
 Mobile: 850-259-8009
 ben@yachtamerican.com

