



# 2000 Camano 31 Troll

Boat Type: Trawler

Address: Foley, AL, US

Price: \$98,900



## OVERVIEW

Gorgeous pocket trawler with a low-hour Volvo diesel, bow thruster, updated Raymarine Hybridtouch electronics, optional diesel generator and AC/Heat! This 31 Troll has been lightly enjoyed and is ready to Loop or cruise to the islands now. Her owners have purchased a larger yacht and are ready to sell the "Thx Kids" now. She has spent her entire life on a boatlift and is lying on a freshwater river off of Mobile Bay and ready to be viewed anytime! Be sure to take the 3D Virtual Tour by clicking on the External Link section and also the Running Video!

## SPECIFICATIONS

### Basic Information

Manufacturer:	Camano	Vessel Name:	Thx Kids
Model:	31 Troll	Boat Type:	Trawler
Year:	2000	Hull Material:	Fiberglass
Category:	Power	Hull Type:	
Condition:	Used	Hull Color:	
Location:	Foley, AL, US	Designer:	
Available for sale in U.S. waters:	Yes	Flag of Registry:	

### Dimensions & Weight

Length:	31 ft - 9.45 meter	Draft - max:	-
LOA:	-	Bridge Clearance:	-
Beam:	10 ft 5 in - 3.18 meter	Dry Weight:	-

### Engine

Make:	Volvo	Engine Type:	Inboard
Model:	TAMD41P-A	Drive Type:	Direct Drive
Engine(s):	1	Fuel Type:	Diesel
Hours:	956	Horsepower:	200 (Individual), 200 (combined)
Cruise Speed:	12 MPH	Max Speed:	17 MPH
Range:	-	Joystick Control:	No

### Tank Capacities

Fuel Tank:	-	Holding Tank:	-
Fresh Water Tank:	-		

### Accommodations

Total Cabins:	-	Crew Cabins:	-
Total Berths:	-	Crew Berths:	-
Total Sleeps:	-	Crew Sleeps:	-
Total Heads:	1	Crew Heads:	-
Captains Cabin:	-		

## DESCRIPTIONS

### Camano Overview

The Camano 31 is well-known for the quality and strength of its construction and its unique "Keelform" hull which enables economical cruising at above trawler speeds. This vessel has spent almost its entire life in a lift when not cruising. It is a very well-kept and maintained vessel and with its bowthruster is very easy to maneuver. It would be

an ideal vessel for making the "Great Loop!"

## **Vessel Overview and Notable Options**

### **Cockpit**

- Ample lazarette storage in cockpit sole
- Propane storage in locker under flybridge steps
- Built-in fender and line storage in transom
- Swim platform with Weaver dinghy davit attach point
- Hot and cold outdoor shower

### **Salon**

- Teak and holly flooring
- U-shaped convertible settee to port
- Sliding windows port and starboard
- Lower helm
- AC/DC distribution panel
- Full interior curtains on tracks
- 16,000 BTU AC/Heat

### **Lower Helm**

- Raymarine Hybridtouch GPS/Chart/Radar
- Simrad AP22 autopilot
- Raymarine Tridata digital depth/knot
- ICOM VHF
- Bow thruster controls
- Trim tab switches w/ position displays

### **Upper Helm**

- Raymarine Hybridtouch GPS/Chart/Radar
- Simrad AP22 autopilot
- Raymarine Tridata digital depth/knot
- ICOM VHF
- Bow thruster controls
- Saturn compass

### **Engine Room/Mechanical Systems**

- Volvo TAM41P- A main engine @ 200 HP
- Volvo HS45A-A transmission
- Freshwater, closed-loop system with heat exchanger
- Entec EW4200D generator 4.2kW, 1100 hours

### **Electrical Systems**

- Qty 3 Group 31 batteries
- TrueCharge 20 battery charger w/ display at lower helm
- 30A shore power service, 50' cord

### **Head**

- Jabsco electric toilet
- Macerator and 14.5 gallon holding tank
- Sink with hot/cold water

- Wet-head style shower
- Ample storage throughout head

### **Hull and Decks**

- Delta fast-set plow
- Stainless railing from bow to stern
- Over-sized forward hatch for ventilation

### **Forward Stateroom**

- Large V-berth with storage port and starboard
- Anchor locker access forward
- Ample storage beneath berth

### **Galley**

- NovaKool AC/DC Fridge
- Force 10 stainless steel propane fueled stove
- Kenmore Microwave
- Single sink with hot/cold water

### **Flybridge**

- Full bimini top
- Qty swivel captain chairs
- Aluminum radar arch
- Ample space for other equipment

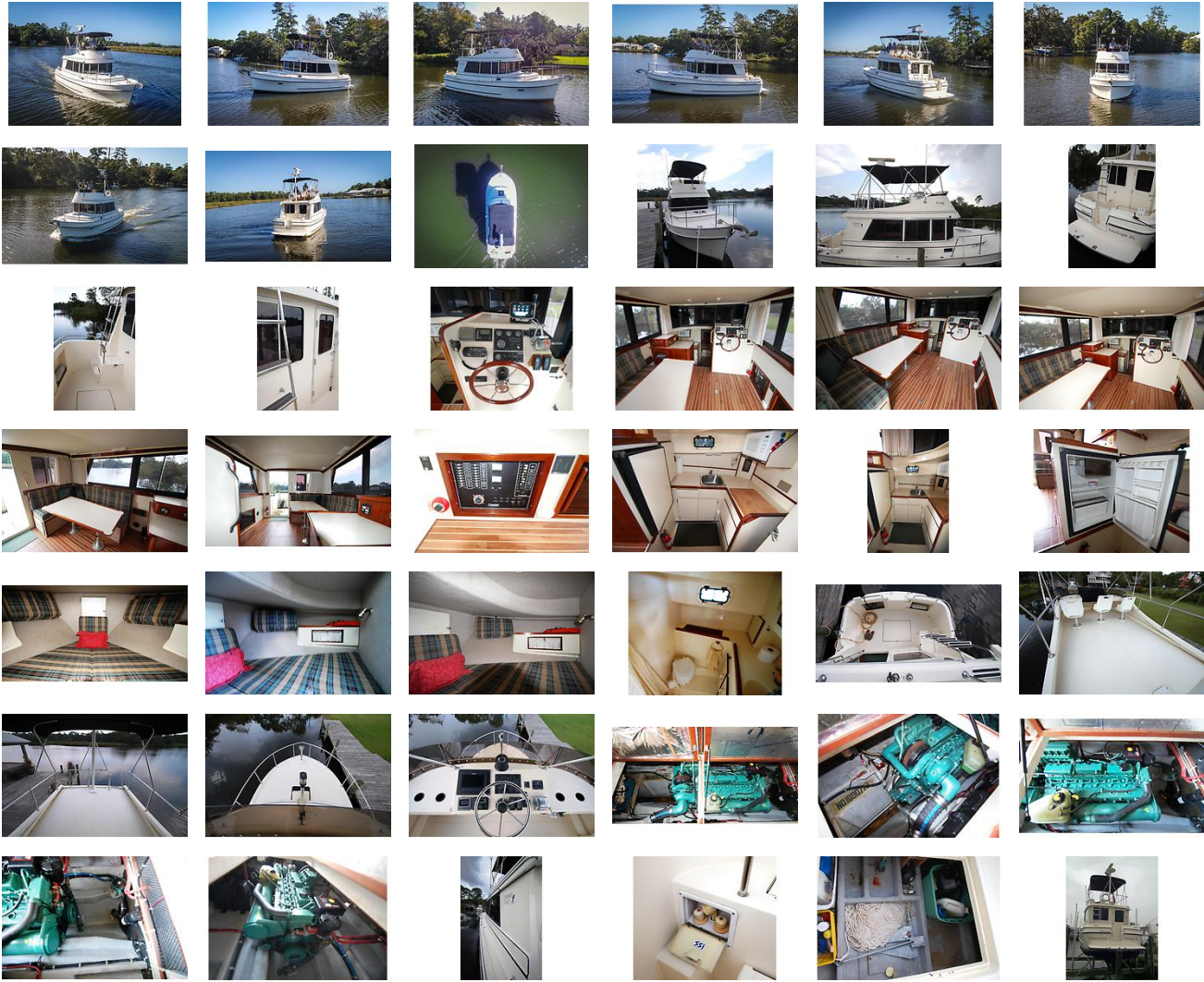
### **Disclaimer**

The Company offers the details of this vessel in good faith but cannot guarantee or warrant the accuracy of this information nor warrant the condition of the vessel. A buyer should instruct his agents, or his surveyors, to investigate such details as the buyer desires validated. This vessel is offered subject to prior sale, price change, or withdrawal without notice.

### **External Links**

- [Virtual Tour](#) Additional Media

# GALLERY



# LOCATION MAP



**AMERICAN** ENERGY  
MARINE BROKERAGE | INTEGRITY  
INGENUITY

**BEN MONTGOMERY**  
American Marine Brokerage  
13430 Gulf Beach Hwy PMB #92  
Pensacola, FL, US  
Office: 844-44-YACHT  
Mobile: 850-259-8009  
ben@yachtamerican.com

