



# 2006 Tiara 4400 Sovran

Boat Type: Express Cruiser

Address: Fairhope, AL, US

Price: **\$339,000**



## OVERVIEW

SELLER WILL CONSIDER PARTIAL TRADE OF A SMALLER CRUISER OR CENTER CONSOLE.

UPDATE: CHECK OUT THE VIRTUAL TOUR UNDER EXTERNAL LINKS IN THE FULL DESCRIPTION AS WELL AS THE DRONE VIDEO!

Great opportunity on a true gem of a Tiara. "Sovranty" has had one loving owner since new and she's been pampered all around. She sports under 600 hours on her Cummins engines, she has the Tiara "Savannah" and teak package, new generator, underwater lights and many upgrades over the past year. Her owner has priced her to sell immediately and she is fresh out of the boatyard 7/18 (wax, engine room detail, bottom paint, upgrades). Put "Sovranty" at the top of your list!

## SPECIFICATIONS

### Basic Information

Manufacturer:	Tiara	Vessel Name:	
Model:	4400 Sovran	Boat Type:	Express Cruiser
Year:	2006	Hull Material:	Fiberglass
Category:	Power	Hull Type:	Modified Vee
Condition:	Used	Hull Color:	
Location:	Fairhope, AL, US	Designer:	
Available for sale in U.S. waters:	Yes	Flag of Registry:	US

### Dimensions & Weight

Length:	44 ft - 13.41 meter	Draft - max:	4 ft 5 in - 1.35 meter
LOA:	-	Bridge Clearance:	-
Beam:	14 ft 6 in - 4.42 meter	Dry Weight:	33150 ft - 10104.12 meter

### Engine

Make:	Cummins	Engine Type:	Inboard
Model:	QSM-11	Drive Type:	Direct Drive
Engine(s):	2	Fuel Type:	Diesel
Hours:	590	Horsepower:	660 (Individual), 1320 (combined)
Cruise Speed:	-	Max Speed:	-
Range:	-	Joystick Control:	No

### Tank Capacities

Fuel Tank:	526 gallons - 1 tank(s)	Holding Tank:	50 gallons - 1 tank(s)
Fresh Water Tank:	150 gallons - 1 tank(s)		

### Accommodations

Total Cabins:	-	Crew Cabins:	-
Total Berths:	-	Crew Berths:	-
Total Sleeps:	-	Crew Sleeps:	-
Total Heads:	1	Crew Heads:	-
Captains Cabin:	-		

## DESCRIPTIONS

### Overview

#### Overview

Tiara Yachts is proud to offer another beautifully designed and constructed yacht - the Sovran 4400. A gelcoat outer layer, high-performance tie-coat quadaxial fiberglass, balsa core, epoxy resin, and vacuum bag technology lay the

groundwork for a yacht that's unsurpassed in quality and simple quiet elegance. The long, sweeping deck of the 4400 is constructed with a gelcoat outer layer, hand-laid fiberglass and balsa core with vinylester resin. The beautifully crafted, custom-curved composite windshield is seamlessly integrated with the hardtop of the 4400. Behind the composite windshield, the 4400 incorporates a hinged helm console, with full engine instrumentation and an admiral full double-wide helm seat which is adjustable forward to aft, up and down. Intuitive design plus time-tested placement of gauges, throttles, and controls, ensure that being behind the helm is akin to a ride on cloud nine. The aft of the 4400 offers a standard swim platform, extending the 4400 by an extra 52 inches. This extra space provides room for a personal watercraft, an inflatable dinghy, and / or plenty of room for family and friends to enter and exit the water on a diamond patterned non-skid surface. Rear storage space is built-in and accessed through a hydraulically actuated fiberglass hatch. Below decks, the 4400 features plush leather seating, Corian countertops, stainless steel sink, abundant storage, and a built-in 22-inch flat screen TV with DVD technology. The lounge features a folding birds eye maple / teak table which converts to berth, increasing sleeping accommodations to six. The master stateroom boasts a queen-size pedestal bed, with spring mattress, and storage below. The second stateroom not only comes with two overlapping, bunk style beds but also a combination washer / dryer. The second stateroom also has its own access to the head.

#### Salon

- Teak & Holley hardwood floor
- U-shaped dining area with seating for five
- Dinette w/high gloss finish converts to berth
- Premium "Copper Sage" interior with sand ultra leather
- Sharp 22' flat-screen TV
- Bose AM/FM/CD stereo, integrated DVD & Bose surround sound
- Central vacuum system
- 12,000 BTU Marine Air
- Custom decor w/pillows

#### Galley

- Stainless steel sinks
- Sub-zero refrigerator/freezer
- Corian countertops
- Garbage disposal
- (2) burner ceramic cooktop
- Coffee maker
- Microwave/convection oven

#### Master Stateroom

- Wood blinds
- Inner spring mattress
- (2) reading lamps
- (2) cedar lined hanging lockers
- Zone 2 of Bose stereo system
- 15" flatscreen TV
- 9,000 BTU Marine Air
- Custom decor with pillows

- Corian vanity countertop in head
- Vacu-Flush toilet
- Stall shower in head
- Corian inlay head floor

#### Guest Stateroom

- 6,000 BTU Marine Air
- Twin over/under berths
- Entry to day/guest head
- Decor pkg. w/pillows
- Vacu-flush toilet
- 13" Sharp flatscreen TV

#### Electronics and Navigational Equipment

- (2) Raymarine E120 multi 12" color displays
- Raymarine 4' open array radar antenna
- Raymarine RS 125 Waas GPS
- Smartcraft engine monitor
- ACR spotlight
- Raymarine ST800 auto
- Raymarine ST2-90 graphic display
- Clarion Sirius radio
- Richie compass
- Raymarine 240 VHF radio

#### Electrical System

- 10kw Onan generator with sound shield-new 2016
- (1) 250v/50 amp Glendining cable master
- (1) 120v/30 amp shore power
- Cable TV and phone hook up
- Charles battery charger
- Bow thruster charger

#### Cockpit

- Helm hardtop with integrated windshield
- 32,000 BTU helm Marine AC/Heat
- Stidd double wide helm seat- electrically controlled
- Canvas seat covers
- Upper cockpit wetbar with refrigerator
- Portside lounge seating w/table
- Clarion cockpit stereo
- Molded-in bench cockpit seat
- Teak cockpit table

#### Deck Equipment

- Dockside water inlet
- Dual air horn
- White gelcoat deck & hull
- Molded-in hullside engine ventilation system
- Bennett trim tabs
- Molded-in fiberglass pulpit
- Windlass
- Forward sunpad
- 60" swim platform
- St. Croix Davit system

#### Recent updates and Upgrades

- Underwater lights
- A/C and Freshwater pumps replaced
- Spreader lights replaced
- Full Wax Detail and Bottom Paint August 2018
- Full Engine Room Detail and Paint August 2018
- New Generator
- New Seat Covers
- Bow Thruster rebuilt

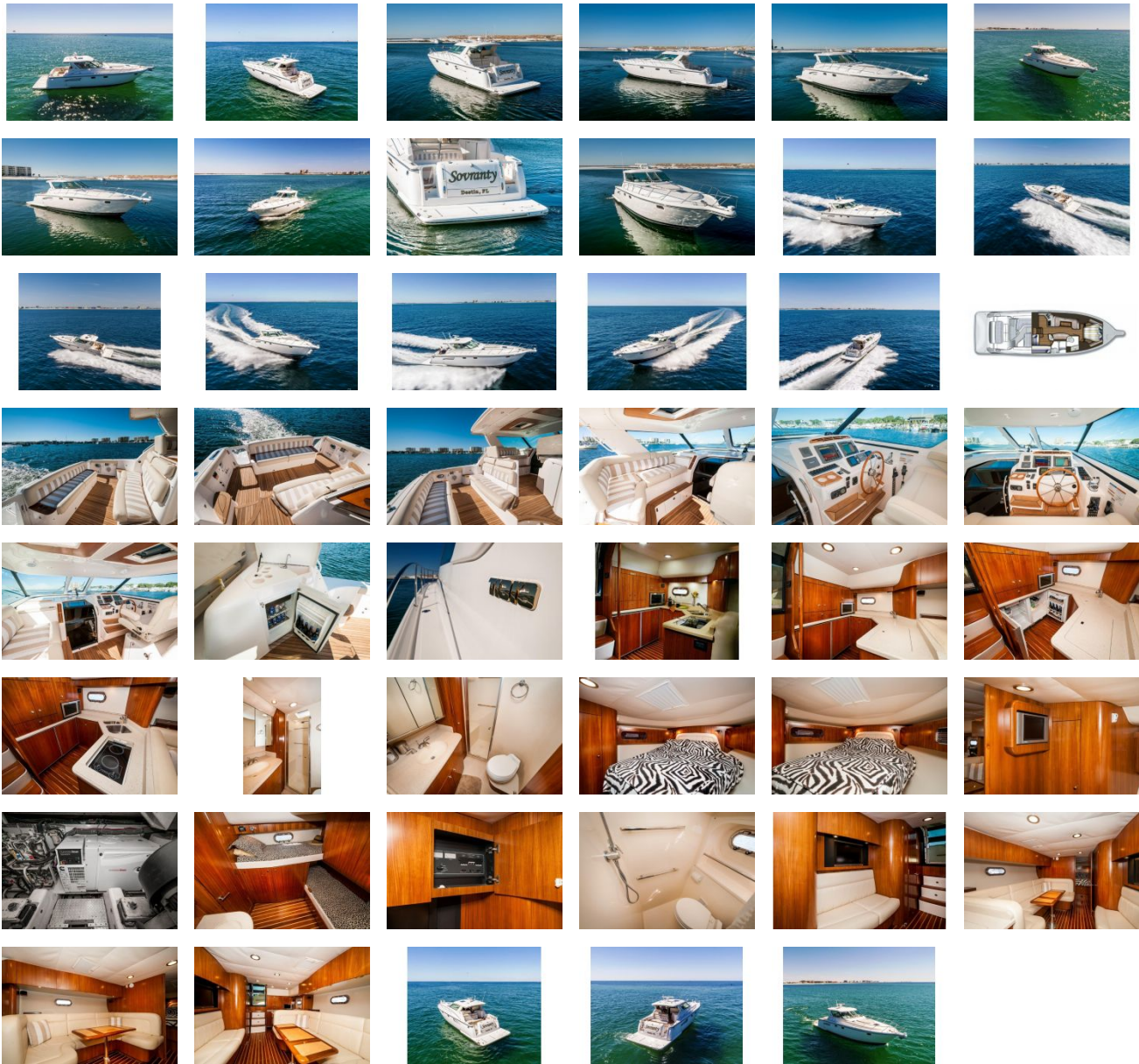
#### **Disclaimer**

The Company offers the details of this vessel in good faith but cannot guarantee or warrant the accuracy of this information nor warrant the condition of the vessel. A buyer should instruct his agents, or his surveyors, to investigate such details as the buyer desires validated. This vessel is offered subject to prior sale, price change, or withdrawal without notice.

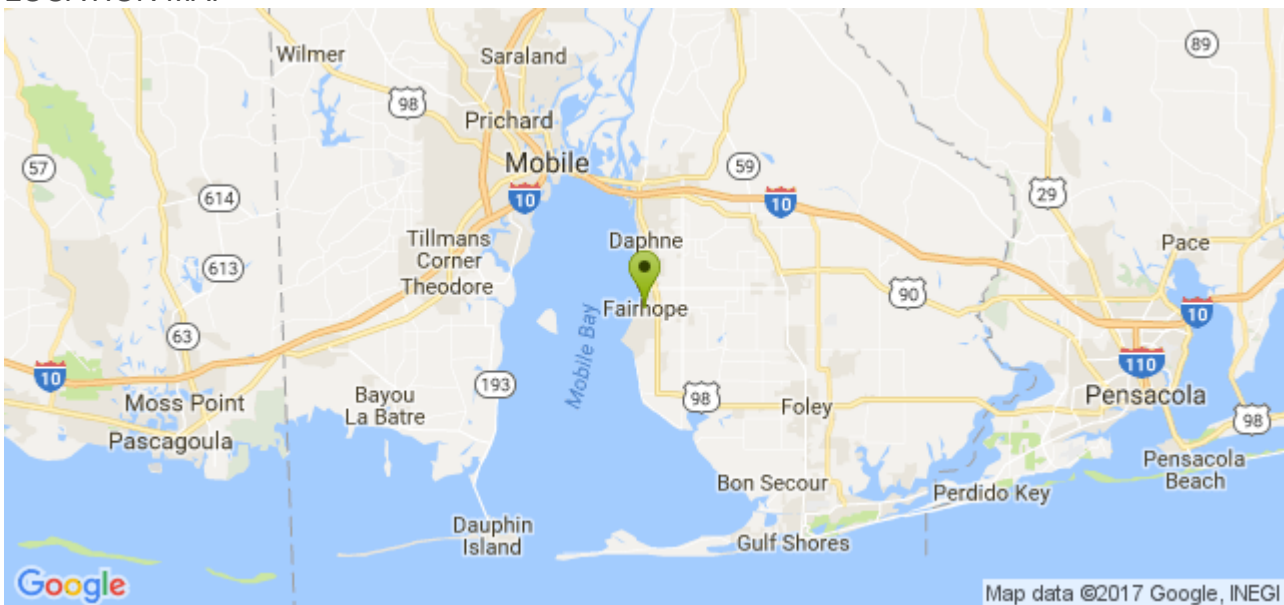
#### **customContactInformation**

Contact listing agent Ben Montgomery directly at 850-259-8009 for specifics on Sovranty.

# GALLERY



# LOCATION MAP





**BEN MONTGOMERY**  
**American Marine Brokerage**  
13430 Gulf Beach Hwy PMB #92  
Pensacola, FL, US  
Office: 844-44-YACHT  
Mobile: 850-259-8009  
[ben@yachtamerican.com](mailto:ben@yachtamerican.com)

