



2015 Grady-White Express 370

Boat Type: Saltwater Fishing

Address: Elberta, AL, US

Price: \$485,000



OVERVIEW

Dry stored since new. Low hours, nice options. All engine services completed. Ready for summer.

****Price Reduced****. owner says sell !!!!

SPECIFICATIONS

Basic Information

Manufacturer:	Grady-White	Vessel Name:	
Model:	Express 370	Boat Type:	Saltwater Fishing
Year:	2015	Hull Material:	Fiberglass
Category:	Power	Hull Type:	
Condition:	Used	Hull Color:	
Location:	Elberta, AL, US	Designer:	
Available for sale in U.S. waters:	Yes	Flag of Registry:	

Dimensions & Weight

Length:	37 ft - 11.28 meter	Draft - max:	-
LOA:	-	Bridge Clearance:	10 ft 6 in - 3.2 meter
Beam:	13 ft 2 in - 4.01 meter	Dry Weight:	14919 ft - 4547.31 meter

Engine

Make:	Yamaha	Engine Type:	Outboard
Model:	F300	Drive Type:	
Engine(s):	3	Fuel Type:	Gas/Petrol
Hours:	-	Horsepower:	300 (Individual), 900 (combined)
Cruise Speed:	-	Max Speed:	-
Range:	-	Joystick Control:	No

Tank Capacities

Fuel Tank:	344 gallons - 1 tank(s)	Holding Tank:	10 gallons - 1 tank(s)
Fresh Water Tank:	54 gallons - 1 tank(s)		

Accommodations

Total Cabins:	-	Crew Cabins:	-
Total Berths:	-	Crew Berths:	-
Total Sleeps:	-	Crew Sleeps:	-
Total Heads:	1	Crew Heads:	-
Captains Cabin:	-		

DESCRIPTIONS

Manufacturer Provided Description

No description

Safety

- 2 automatic bilge pumps (total 3000 GPH) (11,356 LPH)
- Basic flotation
- Bow rail - 316 grade stainless steel
- Cockpit toe rails
- Companion hand rails
- Fire extinguisher holder
- Nonskid fiberglass surfaces
- Self-bailing cockpit w/cockpit drains (6)
- Stainless steel through-hull fittings

Cabin

- Accessory outlet - 110V duplex outlet (3)
- Accessory outlet - 12V
- Air conditioning - 16,000 BTU
- Berth - aft double berth w/mattress
- Berth - convertible dinette area
- Berth - forward vee berth w/mattress
- Cable TV inlet
- Cherry cedar-lined pullout hanging closet
- Cherry dinette table w/adjustable stainless steel base (seats 4)
- Corian® shelf w/drink holders behind dinette
- Flat screen 19" LCD TV w/DVD player & audio/visual inputs
- Forward hatch - low profile acrylic hatches w/retractable screen shade (2)
- Freezer drawer w/ice maker
- Galley - portside galley w/sinks (2), rail light & Corian® counter top & cutting board
- Head - enclosed ventilated head area w/sink, Corian® counter top, shower, lamps, mirror, storage cabinet, cherry shelves (2) & VacuFlush® marine head w/18-gallon (68 l) holding tank
- Illuminated etched glass in bulkhead
- Lighting - dome light
- Lighting - reading light
- Lighting - recessed (2)
- Lighting - skylight
- Lighting - step lights (2)
- Lockable sliding door w/separate screen door
- Microwave oven - 120V (60Hz)
- Mirror
- Refrigerator
- Rod storage racks - aft berth (6)
- Seating - premium vinyl surface dinette surround cushions
- Stereo system w/AM/FM tuner, VHF receiver, MP3 auxiliary audio connections/amplifier, Bluetooth®, remote control & fold down storage; speakers - cabin (2), cockpit (2) & helm (2)
- Storage - cabinet w/cherry doors over galley
- Storage - cherry dinette storage cabinet
- Storage - cherry drawers & doors under galley
- Storage - cherry pull out trash container area
- Storage - molded-in fiberglass storage under dinette
- Storage - molded-in fiberglass under berth compartments (3)
- Storage - shelves
- Storage - stacked cherry drawers under forward berth (2)
- Stove - electric glass top
- Teak and holly sole
- Water heater - 11-gallon (41.6 l) 120V
- Water level indicator gauge
- Water tank - 54-gallon (204.4 l) freshwater

Cockpit & Deck

- 100% hand laid hull & deck

- Accessory outlet - 110V outlet
- Accessory outlet - 12V (2)
- Air conditioning - 16,000 BTU at helm
- Anchor windlass w/chain & rode w/remote switches at helm & windlass
- Batteries (5)
- Battery charger system (2)
- Battery select switches w/extra batteries
- Bow pulpit w/roller
- Bow thruster
- Cleats
- Cockpit bolsters
- Cockpit freshwater shower (recessed) (hot & cold)
- Cockpit lights - blue LED
- Compass w/light
- Cooler - 55-qt. (52.0 l) port side refrigerator/freezer cooler w/digitally controlled thermostat & ob drain
- Deck hardware - 316 grade stainless steel through-bolted
- Dockside power w/galvanic isolator & 30 amp service outlets w/shore power cords (2)
- Dockside water inlet
- Drink holders - stainless steel (10)
- Factory engine pre-rigging
- Fighting chair reinforcement area
- Fish box - 291-qt. (275.4 l) aft refrigerator/freezer fish box w/digitally controlled thermostat & ob drain
- Footrest - helm
- Fuel capacity - 344 gallons (177-gallon tank, 167-gallon tank) (1302 l)
- Generator - 8 kW diesel, 23-gallon (87.1 l) fuel capacity
- Hardtop w/storage net, recessed spreader lights, recessed stereo speakers, horizontal rod holders (6), side mounted rod holders (6), outrigger plates, low profile acrylic hatches (2) & drop, front and side curtains (navy or ivory)
- Hydraulic trim tabs (recessed) w/indicator & retractor
- Integrated outboard mounting system w/swim platform & ladder
- International lighting
- Livewell - 48-gallon (181.7 l) starboard insulated raw water livewell w/ light, full column distribution inlet & ob drain (1100 GPH pump) (4164 LPH)
- Rigging station w/freshwater sink, pullout faucet, insulated bait box, knife/pliers/bait rigs holder & lockable drawers (4)
- Rod holders (4)
- Rod storage racks - horizontal (6)
- Rubrail - high density PVC w/stainless steel insert
- Seating - Deluxe Platinum vertically & horizontally adjustable helm chair w/flip-up bolster
- Seating - fold away aft bench seat w/cushion
- Seating - port lounge seat w/enclosed storage below
- Seating - starboard lounge seat w/convertible configurations & hideaway folding table
- Steering - hydraulic tilt w/power assist
- Steering wheel - 15-in. (38.1 cm) 316 grade stainless steel
- Stern eyes - heavy-duty 316 stainless steel
- Storage - chart storage at helm
- Storage - drawers under starboard seat (2)
- Storage - electromechanically operated electronics enclosure
- Storage - removable transom storage bin
- Storage - under helm footrest
- Storage net
- Transom door - fiberglass
- Washdown - freshwater
- Washdown - pressurized raw water w/hose (forward & aft)
- Windshield - heavy duty welded aluminum windshield w/tempered glass & electromechanically operated center vent
- Windshield washers - freshwater (3)

- Windshield wipers - self parking w/heavy-duty pantograph arms w/separate controls (3)

Disclaimer

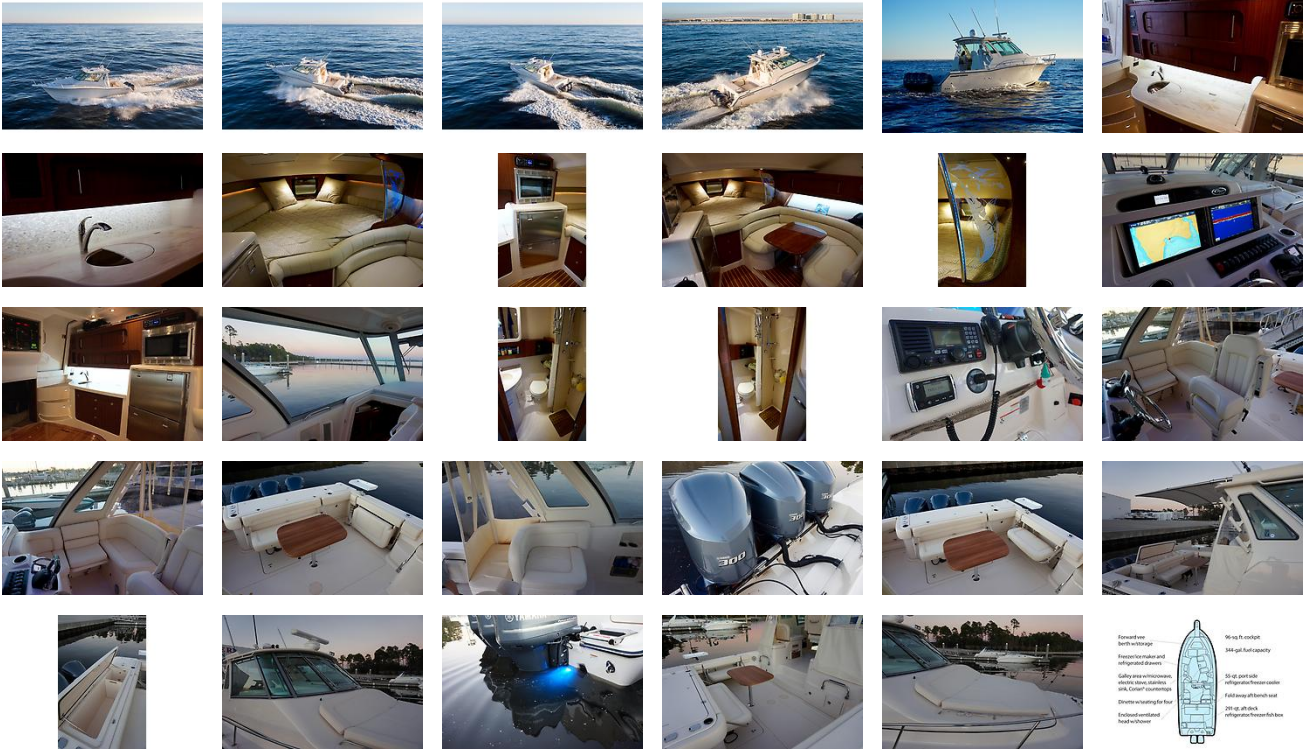
The Company offers the details of this vessel in good faith but cannot guarantee or warrant the accuracy of this information nor warrant the condition of the vessel. A buyer should instruct his agents, or his surveyors, to investigate such details as the buyer desires validated. This vessel is offered subject to prior sale, price change, or withdrawal without notice.**customContactInformation**

Contact Capt Guy at 321-863-7785

External Links

- [Grady-White Website](#)Additional Media

GALLERY



LOCATION MAP



GUY STILLINGER
 American Marine Brokerage
 13430 Gulf Beach Hwy PMB #92
 Pensacola, FL, US
 Office: 844-44-YACHT
 Mobile: 321-863-7795
 guy@yachtamerican.com

