



1996 Hatteras 82 Convertible

Boat Type: Saltwater Fishing

Address: Orange Beach, AL, US

Price: \$990,000



OVERVIEW

An incredible combination of motor yacht and yacht fish that brings you to the most remote locations in the world in comfort and style. Boots Off has enjoyed diligent and thorough care by it's full-time captain, and is immediately ready to travel. Boots Off is a rare offering in today's market. She has only had 3 owners since new. The original owner kept her for over 10 years during which time , he repowered her with the MTU 16V2000's. Sold to her 2nd owner in December of 2006, she was treated to a thorough refit at that time, and a new interior was `installed. In 2013 a complete Awlgrip paint application was completed and new flexteak decks were installed. She has been maintained by a professional crew, and has enjoyed light family use.

Accommodations

This semi custom enclosed bridge convertible, with a skybridge, combines the comforts of a motoryacht with the practicality of a yacht fisherman. Luxurious living spaces abound in her 4 stateroom, 4 head, day head layout. Separate crew accommodations for 2 as well as an abbreviated galley and private head with shower, is accessed from the cockpit.

Vessel Walkthrough Highlights

Full beam master with custom port lights, large tub/shower, and amazing storage is amidship. Forward stateroom features queen berth, starboard quest stateroom offers walkaround queen berth, port guest stateroom has twin lower berths that can convert to a queen berth. In the companionway is the laundry center with linen storage adjacent. Beneath the companionway sole is the storage area for dive tanks and compressors.

The galley, dinette, and day head are forward on the main deck. The salon offers stairway access to the enclosed bridge, a huge seating/relaxing area and access through the large glass doors to a functional aft deck with fixed and movable seating and large dining table. Access to cockpit via port and starboard steps.

The enclosed flybridge is accessed via the salon or aft deck. Features include electronically operated Stidd chairs, wet bar, two very comfortable L-shaped lounges, and a dining table. The upper aft deck features low profile refrigerator/freezer, BBQ grill, large seating area, and a full control station. Access to the skybridge is via a ladder to port. The skybridge provides yet another control station and large forward seating area.

Access to the crew accommodations and the engine room is provided from the cockpit. This layout ensures privacy for the owners party.

Systems and Equipment Overview

Cruisair chilled water air conditioning system (updated 2016), Bauer/Brownie AM555 dive tank compressor, back up air compressor, Watermakers Inc. 2000 GPD watermaker, bow thruster with controls on skybridge, enclosed bridge, cockpit & aft deck of bridge, 4 helm control stations, Glenndenning cable masters.

Electrical Equipment

(2) 35 KW Onan generator

Engines

(2) 16V2000 MTU diesels, 1800HP each, installed new in 2001 and the recommended 3000 hour service was performed in April of 2014.

Skybridge Electronics

Garmin 4100 GPS, Furuno FCV585 color sounder, distance depth finder, auto pilot remote, standard Horizon Gx2150 VHF radio

Enclosed Flybridge Electronics

Garmin 4010 GPS/Map/Depth finder, Furuno FR2110 72 mile color radar, Furuno 36 mile radar, Simrad auto pilot (2014), (2) Northstar 941X GPS, Datamarine digital depth finder, Furuno FCV1000 color sounder, Sirius SAT radio, (2) standard Horizon VHF radios, Samsung screen for engine room cameras, ships computer, Hatteras systems monitor, HD SAT TV system, with 8 receivers, SAT phone and SAT Internet.

Fishing Equipment

Rupp outriggers, Murray fighting chair, eskimo Ice chipper, cockpit controls, rod holders, live well, transom fish box, transom door with gate, tackle center, cockpit freezer, cockpit refrigerator, fresh and salt water wash downs, concealed sink.

Deck Equipment

17'6" Wahoo with VHF, depth finder, hydraulic steering added 2013, rewired 2013, repowered with 90hp Honda 2013, Marquipt 2000lb davit, bow pulpit, anchor windlass, 150# stainless Plowmaster anchor with 280' stainless chain, spare Danforth anchor, full length bow rail.

SPECIFICATIONS

Basic Information

Manufacturer:	Hatteras	Vessel Name:	Boots Off
Model:	82 Convertible	Boat Type:	Saltwater Fishing
Year:	1996	Hull Material:	Fiberglass
Category:	Power	Hull Type:	Modified Vee
Condition:	Used	Hull Color:	
Location:	Orange Beach, AL, US	Designer:	
Available for sale in U.S. waters:	Yes	Flag of Registry:	US

Dimensions & Weight

Length:	82 ft - 24.99 meter	Draft - max:	6 ft 3 in - 1.91 meter
LOA:	-	Bridge Clearance:	-
Beam:	21 ft 5 in - 6.53 meter	Dry Weight:	201000 ft - 61264.8 meter

Engine

Make:		Engine Type:	Inboard
Model:	16V-2000 DDEC Detroit Diesel	Drive Type:	
Engine(s):	2	Fuel Type:	Diesel
Hours:	3899	Horsepower:	1800 (Individual), 3600 (combined)
Cruise Speed:	23 MPH	Max Speed:	28 MPH
Range:	-	Joystick Control:	No

Tank Capacities

Fuel Tank:	4210 gallons - 1 tank(s)	Holding Tank:	-
Fresh Water Tank:	840 gallons - 1 tank(s)		

Accommodations

Total Cabins:	6	Crew Cabins:	-
Total Berths:	-	Crew Berths:	-
Total Sleeps:	-	Crew Sleeps:	-
Total Heads:	6	Crew Heads:	-
Captains Cabin:	-		

DESCRIPTIONS

Manufacturer Provided Description

Whether your lifestyle is suited for cruising or offshore sportfishing, the Hatteras 82 Convertible is well-equipped to meet all your needs with three decks of living space which provide all the features of a mega yacht: a huge salon, spacious galley with dining area, full-beam master suite, VIP guest suite, two additional guest suites, and separated crew's quarters.

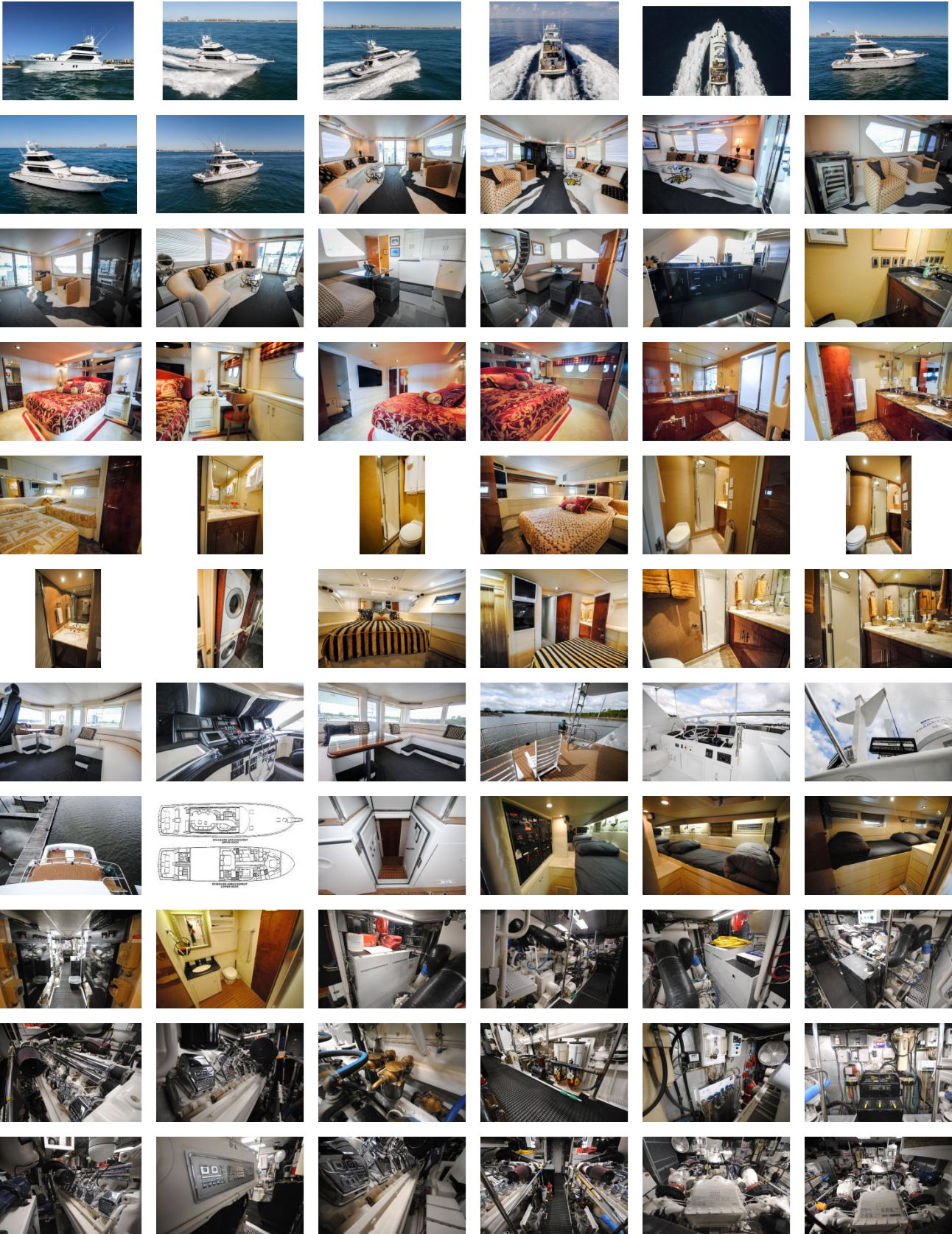
Disclaimer

The Company offers the details of this vessel in good faith but cannot guarantee or warrant the accuracy of this information nor warrant the condition of the vessel. A buyer should instruct his agents, or his surveyors, to investigate such details as the buyer desires validated. This vessel is offered subject to prior sale, price change, or withdrawal without notice.

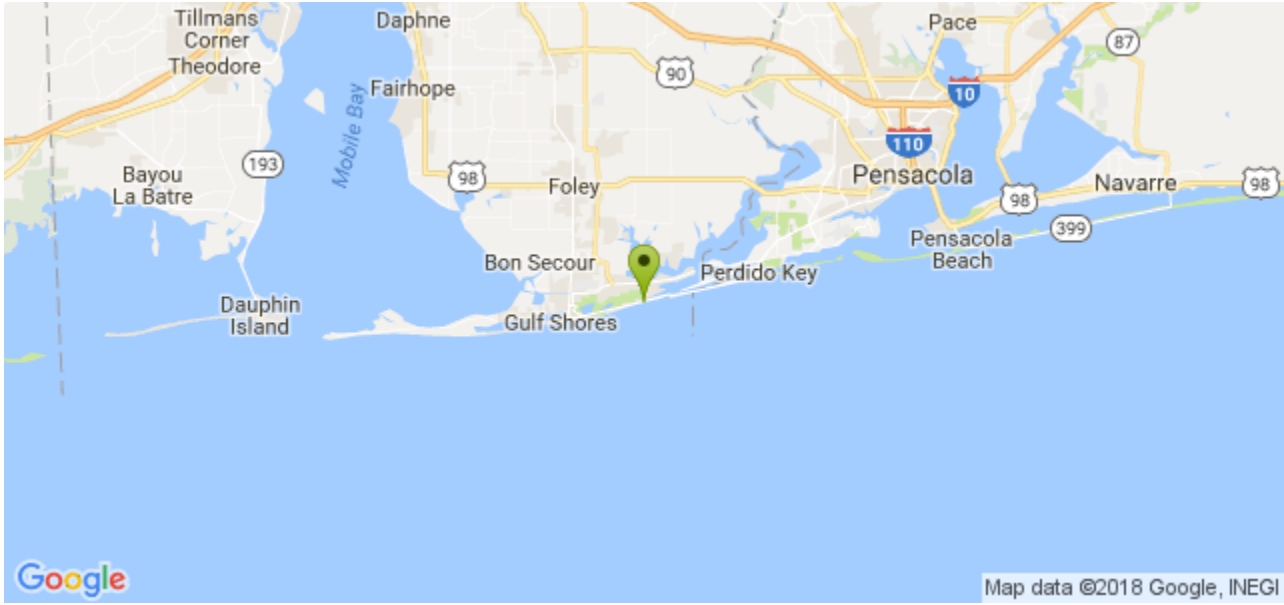
customContactInformation

Contact Alec Breaud (850-399-1811 / alec@yachtamerican.com)

GALLERY



LOCATION MAP



ALEC BREAUD
American Marine Brokerage
13430 Gulf Beach Hwy PMB #92
Pensacola, FL, US
Office: 844-44-YACHT
Mobile: 850-399-1811
alec@yachtamerican.com

